

TX-811 series thermostats are stand-alone digital thermostat with LCD display. Designed for control fan speed, temperature, and on/off the valve in fan coil unit system.

Models are suitable for heating and cooling control of 2-pipe fan coil units. The fan speed can be manually controlled by fan speed key or changed to high/middle/low speed automatically in auto mode.

Sleeping function

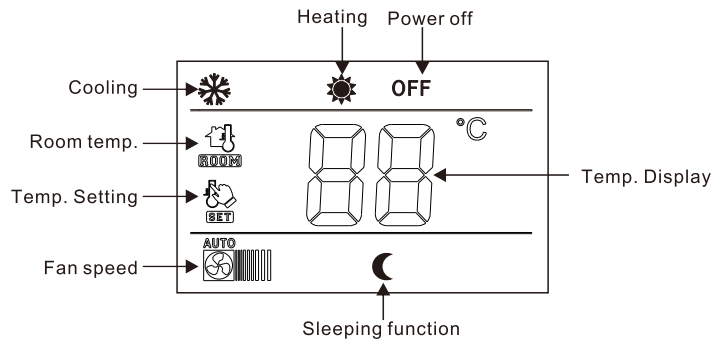
Temperature will be raised 1°C every hour until 26°C under this mode. Especially useful during mid-nigh in spring and autumn.

Features

- Large digital LCD display with blue backlight
- Manual 3-speed or auto fan
- On/off output for valve
- Sleeping function
- Mounted onto standard 86*86mm junction box
- Heating/cooling mode control



LCD display



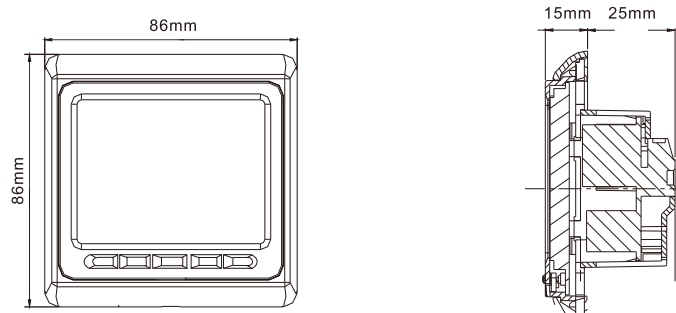
Specifications

Application: 2-pipe FCU
 Power supply: AC220±10% 50HZ/60Hz
 Setpoint range/Setting unit: 10°C ~ 30°C/1°C per step
 Ambient conditions: 0°C ~ 50°C Humidity: < 95%
 Temp. Sensor: NTC 10K(25°C)
 Mode setting: Cool and heating
 Fan speed: Low, Mid, High and Auto
 Control type: On/off control
 Accuracy: ±1°C
 Enclosure: Fire retardant PC ABS
 Wire port: ≤1.5mm²
 Installation/ Dimension: Vertical/ 86×86×40mm(W×H×D)

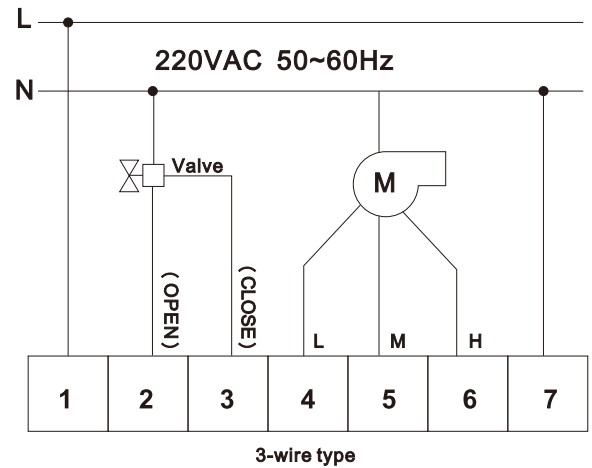
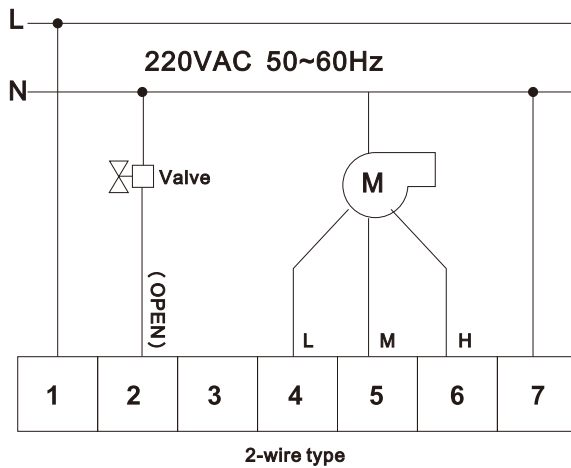
Operation manual

1. Press "⏻" key to turn on or turn off the thermostat. "OFF", "🌞" coin and room temperature will be showed on screen when power off under the activity of NO.5 sleeping function.
2. Press "▲" to increase 1°C per step, while press "▼" to decrease 1°C, within the setpoint range.
3. Press "🔄" to switch the running mode: "❄️" (Cool) or "🌞" (Heat).
4. Press "🌀" to switch fan speed: "🌀" (Low), "🌀" (Mid), "🌀" (High), "🌀" (Auto).
 - A. As setpoint 3°C or more lower than the room temp. "🌀" High speed is switched automatically.
 - B. As setpoint approx. 2°C lower than the room temp. "🌀" mid speed is switched automatically.
 - C. As setpoint approx. 1°C lower than the room temp. "🌀" low speed is switched automatically.
5. Sleeping function:
 - Press "🔄" until the coin "🌙" flash on screen, press "▲" to confirm when power is on
 - Press "🔄" until the coin "🌙" flash on screen, press "▼" to cancel when power is on
6. Temperature compensation:
 - Press "🌀" and "🔄" 3s to enter into the mode under power off, press "▲" to increase 1°C per step, press "▼" to decrease 1°C per step, within setting range -9°C~9°C, press "⏻" to confirm.
7. Press both "🌀" and "▲" to enter into memory function setting under power off, press "▲" or "▼" to switch on/off. All status, including fan speed, mode, temperature and power on/off, will be stored when power failure.

Dimensions



Wiring diagram

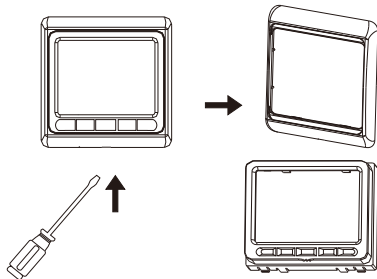


Warning

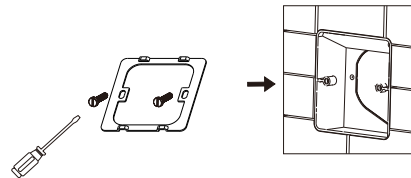
1. Installed by technician.
2. Make sure power is off.
3. Wire strictly to the wiring diagram.
4. The rated current load of our thermostat is 3A, so make sure current for FCU is less than 3A.
5. One thermostat is for one fan coil unit only.
6. Avoiding burn out with large current.

Installation instruction

1. Use the screwdriver into the gap to removed the frame.



2. Complete electrical connections correctly as to the wiring diagram.



3. Insert the thermostat and stuck it into the iron holder.

